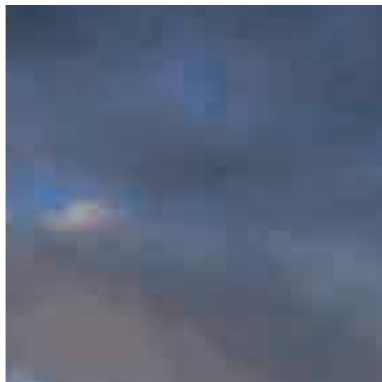
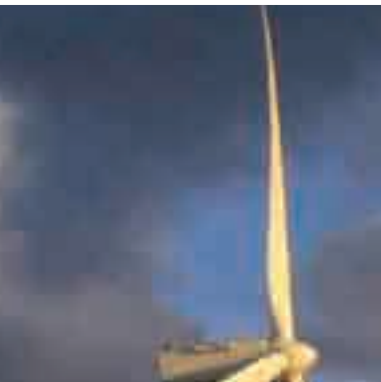




المركز الإقليمي للطاقة المتجددة وكفاءة الطاقة

# R C R E E E

Regional Center for Renewable Energy and Energy Efficiency



The Arab Sustainable Energy Platform



## About RCREEE

RCREEE was set up on basis of the Cairo declaration signed by its member states on June 25, 2008.

The Center was defined as an independent regional organization based in Cairo and dedicated to promotion of renewable energies (RE) and energy efficiency (EE) in its member states which are: Jordan, Bahrain, Tunisia, Algeria, Sudan, Syria, Iraq, Palestine, Lebanon, Libya, Egypt, Morocco and Yemen.

On February 2nd, 2009, the Organizational Charta was ratified by the RCREEE Board of Trustees. It included the Internal Charta of RCREEE, its activities and goals as well as rights and obligations of its member states. Consequently RCREEE became an independent organization with a legal identity that entitles it to own property and dispose thereof, enter into agreements and bear rights and obligations, as well as be a party to legal dispute.

RCREEE member states, development partners and staff aspire that:

- RCREEE becomes one of the leading centers in the region in the field of renewable energy and energy efficiency development.
- RCREEE is recognized as a leading center of excellence in the Arab region.



## RCREEE Pillars

RCREEE formulates and disseminates policies in support of RE and EE and increase the share of renewable energy and energy efficiency products and services in and from countries from the Arab region on the global market. RCREEE operates in four major pillars:

- **RE&EE Policy Development:** RCREEE supports the policy making process to promotRE and EE. One of the main components of any political activity is encouragement of a regional dialogue and establishing networks of regional RE and EE activists.
- **Public Private Partnership:** RCREEE encourages the private sector to actively participate and play a leading role in the development and production of renewable energies and energy efficiency and facilitating it in member states. RCREEE takes effective steps that encourage the private sector to lead and participate effectively in the development of RE & EE. RCREEE also supports participation of the private sector through preparation and dissemination of the relevant policies.
- **Research and Development:** RCREEE supports enhancement of research and increases the participation of universities and research centers and institutes in decision-making process. The Center also supports the development of state of art technologies in the field of RE and EE and helps in developing a regulatory framework supportive of research and encourages cooperation within the region and with the European Union. Additionally, RCREEE supports pilot studies and projects that use innovative technology.
- **Capacity Building:** Fulfilling training and capacity building needs for technical and supreme calibers in member states

### RCREEE Pillars / Work Packages



RCREEE devotes its efforts to changing the current situation in projects that can produce concrete results. RCREEE assesses the quality of its research through the possibility of their implementation.

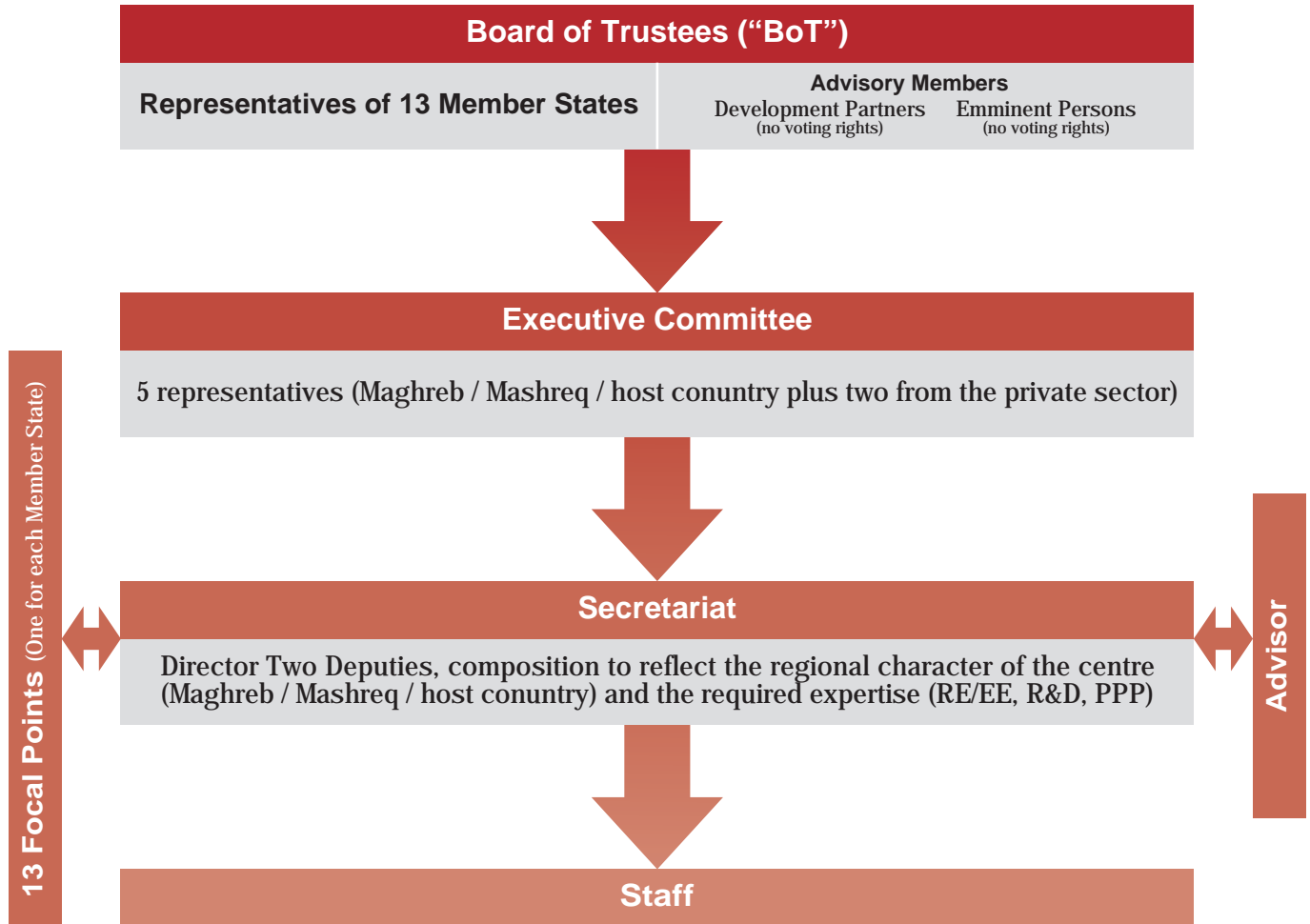
## RCREEE Objectives:

With its thirteen founding states (Jordan, Bahrain, Tunisia, Algeria, Sudan, Syria, Iraq, Palestine, Lebanon, Libya, Egypt, Morocco and Yemen) RCREEE initiates a regional policy dialogue and promotes policies favourable to renewable energies and energy efficiency, also encouraging cooperation with the private sector and fostering applied research and development as well as building capacity and networking activities.

- Expanding RE and EE cooperation networks between member states and the EU-countries as well as relevant regional organizations.
- Promoting RE & EE best-practices and the implementation of quality improvement concepts in member states.
- Expanding the scope and scale of private-public-partnerships for renewable energy and energy efficiency in participating countries,
- Increasing the benefits to Arab countries from EU-MENA technology cooperation in renewable energy and energy efficiency and from technology transfer,
- Raising the level of research and development investments in RE and EE in participating countries,
- Developing and implementing new RE and EE financing mechanisms.



# RCREEE Organizational Charta



## Board of Trustees

The Board of Trustees is the supreme body of RCREEE. It consists of voting members (“Voting Members”) and non-voting members (“Advisory Members”). All Board of Trustees members have the right to be present in Board of Trustees meetings and may actively take part in deliberations and discussions. The meetings are chaired by the Board of Trustees Chairman who shall be determined from among the Board of Trustees members on a rotational basis for a one year term following the Arabic alphabetic order of the Member States.

The competencies of the Board of Trustees comprise all fundamental matters of the Centre which include: discussions on the vision, mission and approval of the work program, activities and budget of RCREEE. In addition to appointing members of the Executive Committee and ratifying the appointment of the Executive Director.

The Board of Trustees shall convene at least once a year. The Board of Trustees shall adopt decisions with no objections (consensus) among the present Voting Members. If, regarding a particular issue, no consensus can be reached the issue is put up for vote. In that event, a respective resolution is adopted if a majority of the present Voting Members vote in favor of the proposed resolution; in the case of equal voting, the vote of the Chairman of the Board of Trustees is decisive.

## Executive Committee

The Executive Committee consists of five members. It is desired that one of the members is from the Host Country, one from the Mashreq and one from the Maghreb. In addition, at least two members of the Executive Committee shall be from the private sector. The Executive Committee is considered the link between the Board of trustees and the Secretariat which executes its decisions.

The Executive Committee shall determine one member as chairman (the “Executive Committee Chairman”), who shall serve as point of contact for the Board of Trustees and the Secretariat and is responsible for convening and recording the meetings of the Executive Committee.

The Executive Committee shall meet in regular intervals at least twice a year and as required upon request of the Executive Director who sets the meeting agenda.

## RCREEE Secretariat

The Secretariat shall be in charge of running the Centre. The Secretariat consists of the director (the “Executive Director”), the deputy directors (the “Deputy Directors”), as well as further administrative and technical staff. In addition, the Secretariat shall be complimented by a network of focal points.

The Executive Director is appointed by the Executive Committee. The appointment is then ratified by the Board of Trustees. The term of appointment shall be three years and can be renewed. The Executive Director is in charge of the RCREEE management,

The appointment of the Executive Director and the Deputy Directors shall reflect the regional character. It is desired that these positions are filled by the Host Country, Maghreb countries and Mashreq Countries.

The Secretariat are in charge of running the Center on both administrative and technical level. In addition, the Secretariat shall represent the Center in all regional and international events. The Secretariat shall be complimented by a network of focal points in the member States who act as technical points to cover the activities of the Centre.

## Financing of RCREEE

In the start up phase, RCREEE is supported financially and technically by Egypt, Germany, the EU and Denmark. The development partners have pledged to provide financial and technical assistance to RCREEE with an aggregate value of EUR 15 million during the initial five years. The financial support shall help RCREEE to build a sustainable operation. Through:

- Membership fees determined by BOT and paid by member states
- Voluntary contributions from the member states, development partners and donors.
- Income generated from research, studies and consultancy work.



## RCREEE Main Considerations

The conviction behind RCREEE establishment centre was that RE and EE are the topics that should not be confined within national borders of a single country and the permanent need for dialogue with European and international entities and institutions. While formulating and implementing plans and strategies, RCREEE takes into consideration the following:

- RCREEE is a regional independent organization.
- Equal representation of member states.
- Non-dependence of the administration to any country or organization.
- Freedom to determine its programmes in accordance with the requirements of the region and the resolutions of the Board of Trustees and the Executive Committee.
- RCREEE is financially independent and keeps the right of management of its financial funds and financial transactions.
- The centre has the right to provide advisory services including marketing and promotional programmes that serve its sustainability.
- RCREEE has the right and freedom in the appointment of personnel including experts, technicians and others to achieve his plans.
- RCREEE has an International Legal status as an independent organization. Its personnel enjoy freedom of mobility in compliance with international laws and the laws of the Arab Republic of Egypt as the host country.

المركز الإقليمي للطاقة المتجددة وكفاءة الطاقة

**RCREEE**

Regional Center for Renewable Energy and Energy Efficiency

Regional Centre for Renewable Energy  
and Energy Efficiency (RCREEE)

Building of the Hydro Power Plants  
Melsa District - Ard El Golf  
Nasr City - Cairo, Egypt

Tel. : +202 241 54755  
+202 241 54691

Fax : +202 241 54661  
e-mail: info@rcreee.org

[www.rcreee.org](http://www.rcreee.org)